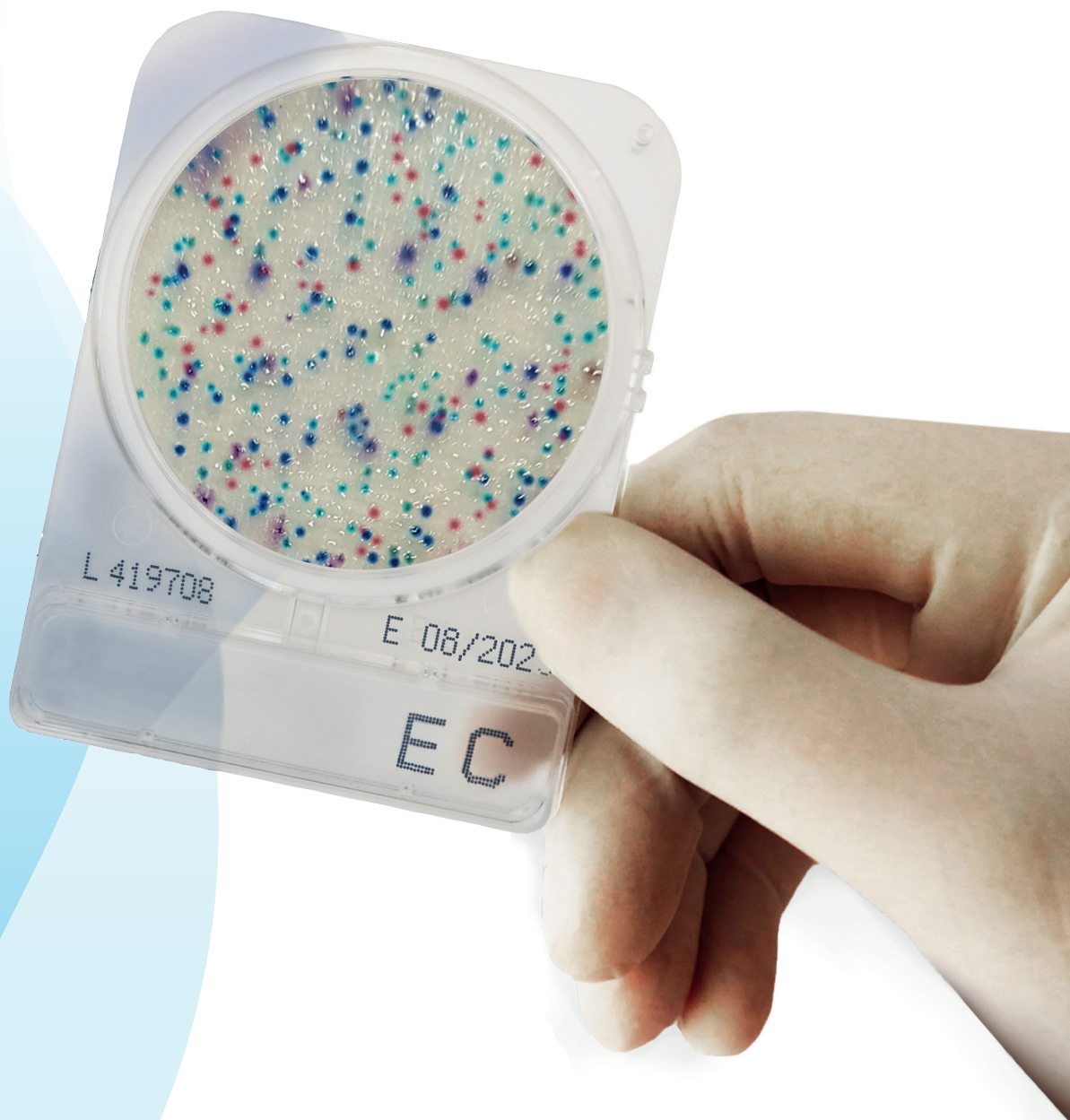


# CompactDry for Scharlau



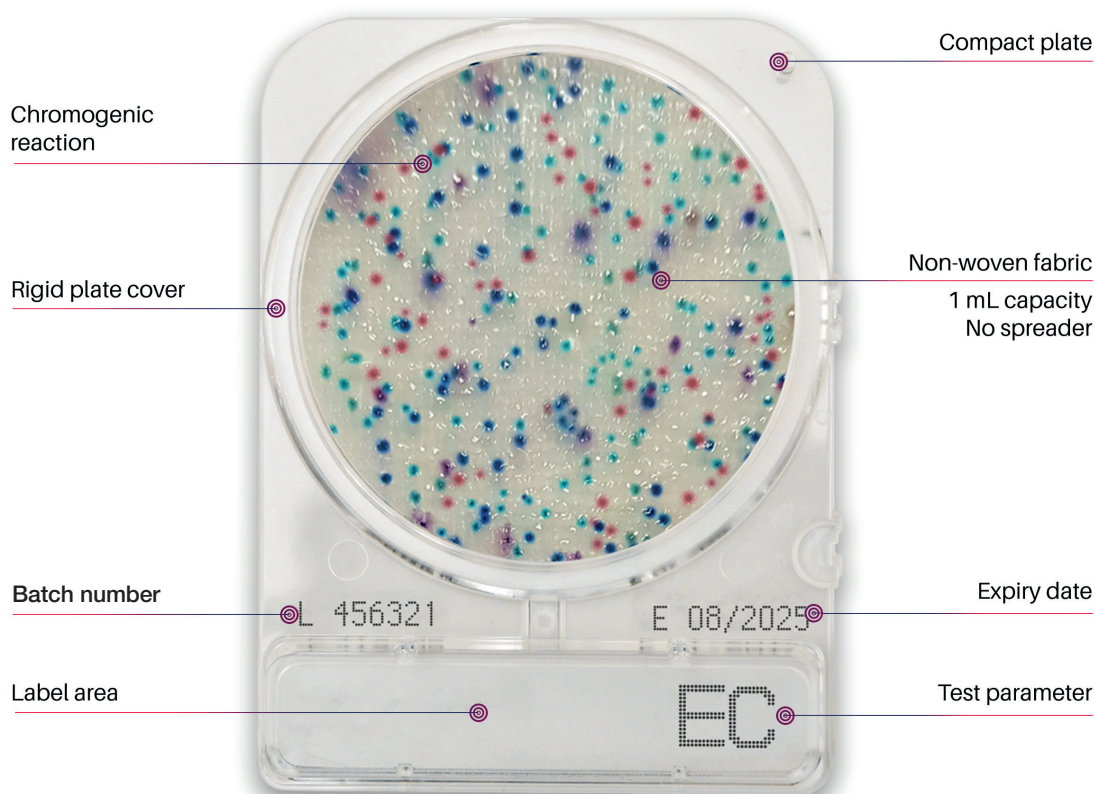
## CompactDry: an easy test method to detect and identify microbial contamination

CompactDry - a *ready-to-use* method to minimise microbial testing time and improve quality control processes. Dehydrated, selective and chromogenic media for total count and/or microbial species identification.

Can be used to test raw materials and processed food products - food, drinks, ready meals, cosmetic and environmental. CompactDry is also used to test surfaces (both food and environmental) using sample swabbing.

CompactDry has a sealed lid to minimise cross-contamination/spillage and a rigid structure to ease handling and **stacking**.

### Features



### CompactDry: Protocol



**1** Open the cap.



**2** Dispense 1 ml of sample in the centre of the CompactDry plate.



**3** Sample diffuses automatically and evenly across the sheet transforming the dry sheet into a gel within seconds.



**4** Replace the cap, label and turn the plate over.



**5** Incubate for the appropriate time and at required temperature.



**6** Following incubation, count the number of coloured colonies.

## CompactDry EC (*E. coli* and coliforms)



**CompactDry EC** is a medium to detect *E. coli* and coliform bacteria. The medium contains two different chromogenic enzyme substrates: Magenta-Gal and X-Gluc. *E. coli* forms blue colonies. Red and blue colonies counted together provides the total coliform number.

PACKAGES	PRODUCT NUMBER
20 plates	SCD-00EC20
100 plates	SCD-0EC100

<b>Incubation Temperature</b>
35 ± 2 °C (AOAC) 37 ± 1 °C (MicroVal/NordVal)
<b>Incubation Time</b>
24 ± 2 hours
<b>Interpretation</b>
<i>E. coli</i> : Blue / Blue purple colonies Coliform: Total number of both red and blue colonies
● / ●



## CompactDry ETB for Enterobacteriaceae



**CompactDry ETB** is very easy to use system to detect Enterobacteriaceae. Its substrates allows the differentiation of the Enterobacteriaceae from other groups. Enterobacteriaceae are red/purple coloured. Red/purple coloured colonies plus other coloured colonies together form the total gram negative bacteria count.

PACKAGES	PRODUCT NUMBER
20 plates	SCD-0ETB20
100 plates	SCD-ETB100

<b>Incubation Temperature</b>
37 ± 1 °C
<b>Incubation Time</b>
24 ± 2 hours
<b>Interpretation</b>
Red / Red-purple
● / ●



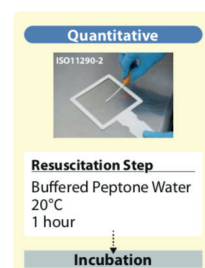
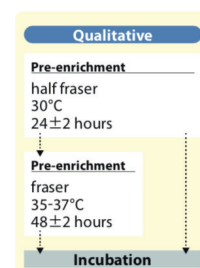
## CompactDry LS for Listeria species



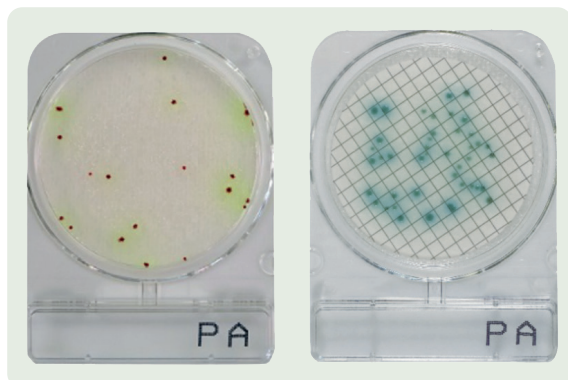
**CompactDry LS** is used for the quantitative detection of Listeria in food and drinks. Evaluation of surfaces and in working environments using the CompactDry Swab. Detection of Listeria through the combination of selective agents and chromogenic substrates. Listeria species form light blue/blue colonies.

PACKAGES	PRODUCT NUMBER
20 plates	SCD-00LS20
100 plates	SCD-0LS100

<b>Incubation Temperature</b>
35 / 37 ± 2 °C
<b>Incubation Time</b>
24 ± 2 hours plus a further 24 ± 2 hours
<b>Interpretation</b>
Light blue / Blue colonies
● / ●



## CompactDry PA for *Pseudomonas aeruginosa*



**CompactDry PA** for Quantitative detection of *Pseudomonas aeruginosa*. *P. aeruginosa* forms red colonies which are generally surrounded by a greenish-yellow halo.

PACKAGES	PRODUCT NUMBER
20 plates	SCD-00PA20
100 plates	SCD-0PA100



**Interpretation**  
**Membrane Filter Method**  
Red colonies surrounded  
by a greenish-yellow halo

● / ●

### Incubation Temperature

34 - 36 °C

### Incubation Time

48 ± 3 hours

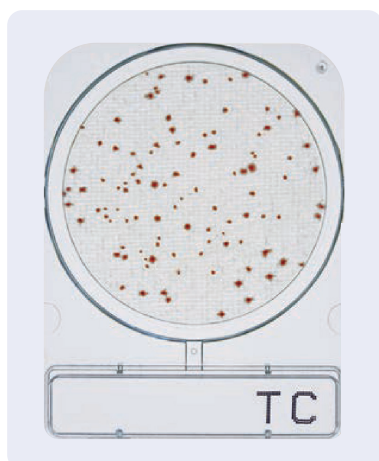
### Interpretation

Red colonies surrounded  
by a greenish-yellow halo

● / ●

**MicroVal**

## CompactDry TC (Total Count)



**CompactDry TC** is a medium for total viable bacterial count, which contains nutrient standard agar. Bacterial colonies are coloured red on CompactDry TC due to the redox indicator tetrazolium salt.

PACKAGES	PRODUCT NUMBER
20 plates	SCD-00TC20
100 plates	SCD-0TC100

### Incubation Temperature

35 ± 1 °C (AOAC)  
30 ± 1 °C (MicroVal/NordVal)

### Incubation Time

48 ± 3 hours

### Interpretation

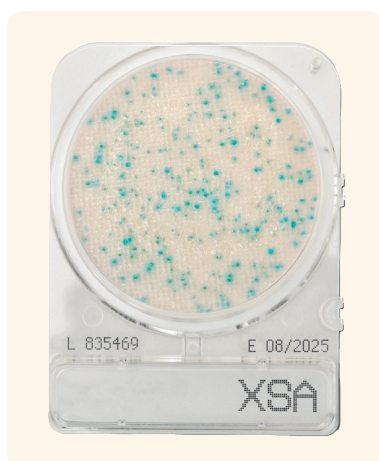
All colonies

● / ○



**MicroVal**  
**NordVal**

## CompactDry X-SA for *Staphylococcus aureus*



**CompactDry X-SA** is a medium used to determine *Staphylococcus aureus* by means of selective growth and differentiation.

PACKAGES	PRODUCT NUMBER
20 plates	SCD-0XSA20
100 plates	SCD-XSA100

### Incubation Temperature

35 ± 2 °C (AOAC)  
37 ± 1 °C (MicroVal/NordVal)

### Incubation Time

24 ± 2 hours

### Interpretation

Light blue / Blue colonies

● / ●



**MicroVal**  
**NordVal**

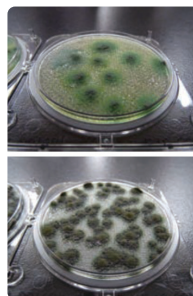
## CompactDry YM for yeast and mould



**CompactDry YM** differentiates yeasts and mould through characteristic colour development and morphology. The medium contains the chromogenic enzyme substrate X-Phos which results in blue yeast colonies. Moulds form “cotton wool” colonies with a characteristic colour. Antibiotics inhibit the growth of bacteria. The CompactDry YM facilitates very good 3-dimension growth of yeast and mould.

PACKAGES	PRODUCT NUMBER
20 plates	SCD-00YM20
100 plates	SCD-0YM100

### 3D Growth of Molds



Photos Courtesy of  
NPO Center for Fungal  
Consultation Japan

### Incubation Temperature

25 ± 1 °C

### Incubation Time

3-7 days

### Interpretation

Yeast: Blue or white  
to cream colonies  
Mold: Cottony colonies  
with mold colours

● / ○



**MicroVal  
NordVal**

**NOTE:** There is the Compact Dry YM Rapid version with which faster results can be obtained in 48 to 72 hours of incubation. The procedure for use is simple, safe and allows the determination and quantification of microorganisms in food products, cosmetics and other raw materials, including pharmaceuticals. If you are interested in this product, please contact us.

## CompactDry: Ordering information

Product	Product Number	Number of plates	Target	Incubation temperature	Incubation time	Approval
CompactDry EC	SCD-00EC20	20 plates	<i>E. coli</i> and coliform	35 ± 2 °C (AOAC) 37 ± 1 °C (MicroVal/NordVal)	24 ± 2 hours	AOAC/NordVal/MicroVal
	SCD-0EC100	100 plates				
CompactDry ETB	SCD-0ETB20	20 plates	Enterobacteriaceae	37 ± 1 °C	24 ± 2 hours	AOAC/NordVal/MicroVal
	SCD-ETB100	100 plates				
CompactDry LS	SCD-00LS20	20 plates	<i>Listeria</i> spp.	35 - 37 ± 2 °C	24 – 48 hours	–
	SCD-0LS100	100 plates				
CompactDry PA	SCD-00PA20	20 plates	<i>Pseudomonas aeruginosa</i>	34 - 36 °C	48 ± 3 hours	MicroVal
	SCD-0PA100	100 plates				
CompactDry TC	SCD-00TC20	20 plates	Total count	35 ± 1 °C (AOAC) 30 ± 1 °C (MicroVal/NordVal)	48 ± 3 hours	AOAC/NordVal/MicroVal
	SCD-0TC100	100 plates				
CompactDry X-SA	SCD-0XSA20	20 plates	<i>Staphylococcus aureus</i>	35 ± 2 °C (AOAC) 37 ± 1 °C (MicroVal/NordVal)	24 ± 2 hours	AOAC/NordVal/MicroVal
	SCD-XSA100	100 plates				
CompactDry YM	SCD-00YM20	20 plates	Yeast and mould	25 ± 1 °C	3 - 7 days	AOAC/NordVal/MicroVal
	SCD-0YM100	100 plates				



CompactDry® TC (Total Viable Count)  
CompactDry® EC ( *E.coli* / Coliforms )  
CompactDry® ECO ( *E.coli* )

CompactDry® CF ( Coliforms )  
CompactDry® YM ( Yeast / Mold )  
CompactDry® YMR ( Yeast / Mold )

**Scharlab S.L.**  
Gato Pérez, 33. Pol. Ind. Mas d'en Cisa.  
08181 Sentmenat, Barcelona, Spain  
Tel.: +34 93 715 19 40 - Fax: +34 93 715 27 65  
E-mail: helpdesk@scharlab.com

**Scharlab Italia S.r.l.**  
Via Massimo D'Azeglio 20  
26900 LODI (LO)  
Tel.: +39 02 9823 0679  
E-mail: customerservice@scharlab.it

**Scharlab Philippines, Inc.**  
4/F Unit K, No. 35 Sto. Niño Street corner Roosevelt Ave.  
Barangay San Antonio, Quezon City 1105, Philippines.  
Tel. - Fax: + 63 2 529 5726  
E-mail: infophilippines@scharlab.ph



Internal use

Visit our website:



F-CODRY023